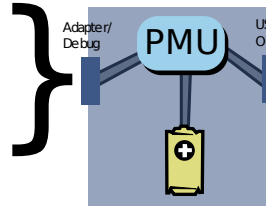


## Power and charging states for all power combinations

### Adapter / Debug path

DISABLE Disconnected  
 DISABLE USB / 500uA  
 DISABLE USB / 100mA  
**ENABLE** USB / 500mA  
**1A / chg** Charger / 1A

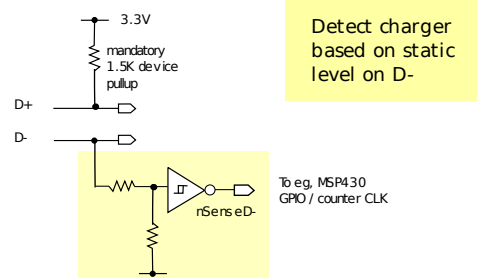
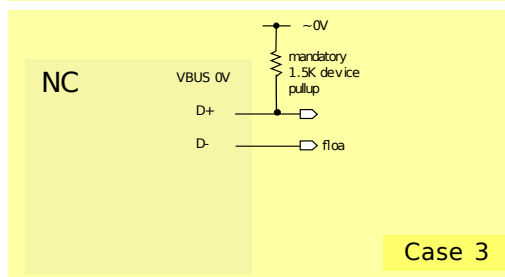
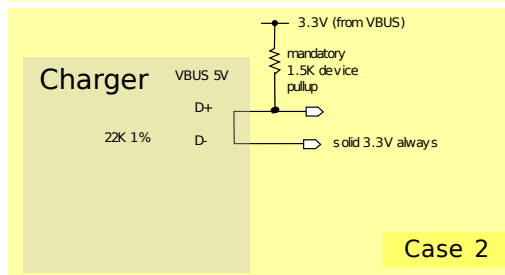
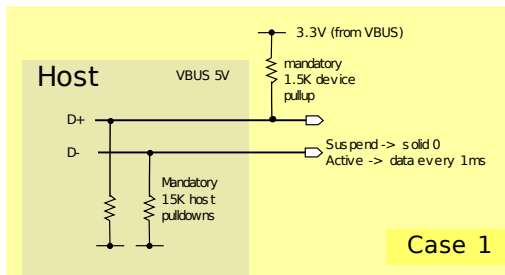


### USB / OTG path

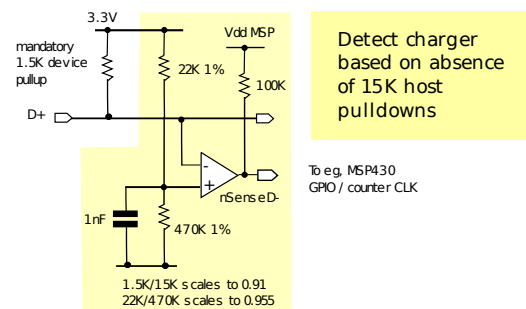
DISABLE Disconnected  
 DISABLE USB / 500uA  
 DISABLE USB / 100mA  
**100mA** USB / 500mA  
**500mA / chg** Charger / 1A  
**1A / chg**

Adapter path enabled  
 forces USB power path disabled

## Sensing debug USB power and charger presence



or



## Debug power state transitions

